

COMMUNITY PROTECTION ALSO RESTORING TE MANA O TE WAI

NORTHLAND REGIONAL COUNCIL

Project: Otiria Spillway **Location:** Otiria, Moerewa, Northland

Otiria Spillway works will reduce flooding to Otiria and Moerewa by restoring the natural river flow path previously cut off by roads and rail.

The challenge

The communities of Moerewa and Otiria have suffered three major flooding events in the last decade. Local housing, Otiria Marae and Te Rito Marae, the local Otiria Rugby Club, a retirement village and both towns have been at risk.

The programme

Lower Spillway works: \$400,000

Feb - Apr 2022

Construction of 60 metre-long bridge: \$3,900,000

Jan 2023 to Dec 2023

Upper spillway and stopbank: \$700,000

Dec 2022 to Dec 2023

Iwi partnership

- Working together - tangata whenua and local government agreeing solutions.
- Sharing kai, meeting in local venues, participating in tikanga.
- Karakia / blessing led by tangata whenua.
- Cultural induction - contractors to local whānau / hapū.

Restoring Te Mana o Te Wai

- Replacing existing bridge with a new bridge to handle a 1:100 year and climate change flood event.
- Spillway to skim flood flow from Otiria Stream and restore natural flow towards Waiharakeke Stream.

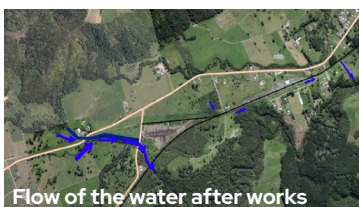
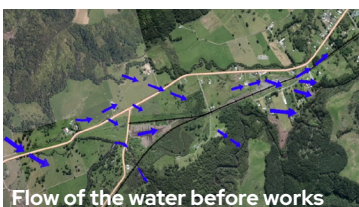
Local input and engagement

- Local knowledge integrated into project plan.
- 10 community roopu engaged and participating.

Collaboration

Successful collaboration between:

Tangata whenua, landowners, Kaitiaki, Willow Jean Prime, NRC Project Team, Councillors, Far North District Council, Haigh Workman Engineers, KiwiRail, KCL - Stage 1 contractors.



Project funding

Kānoa \$2.8m | NRC \$2.2m | Total \$5m

Key Benefits

- ✓ **Protection:**
reducing risk to flood-prone marae, local rugby club, local housing.
- ✓ **Reducing risk:**
reducing severity of a typical flood by ~75%.
- ✓ **Collaboration:**
collaborative and iwi partnership approach to mahi.
- ✓ **Social benefits:**
employing local rangatahi, whānau/hapū.
- ✓ **Whakawhanaungatanga:**
establishing relationships - council, whānau/hapū, contractors, wider community.
- ✓ **Cultural assessment:**
taonga species monitored at local event with NRC freshwater scientists and whānau/hapū.
- ✓ **Events:**
rubbish day, cultural assessment, diverse attendance at cultural induction days.
- ✓ **Education:**
kaitiakitanga training, learning what makes the awa thrive, monitoring.
- ✓ **Enabling affordability:**
many communities cannot absorb increased cost of rates to pay for new or upgraded flood protection schemes. Contribution by central government has enabled increased resilience to climate changes and protection against flooding.



the project has...
."shown us what a true
partnership looks like
from a hapū mana
whenua point of view
when referring to Te
Wakaputanga 1835 & Te
Tiriti o Waitangi 1840."

- Local kaitiaki
Wiremu Keretene